

# The Venice

**2824 Sq. Ft.**

**4 Bedrooms • 2.5 Baths**



\* Please Note : The enclosed materials are reproduced from artist's renderings. All measurements shown are approximate. Location, size, and existence of doors, windows, walls, fireplace, showers, and any other items depicted may vary depending on exterior preference or choice of options. Prices, plans, benefits, and locations are subject to change without notice. Floor plans, features, options/upgrades, and benefits vary by community. See the sales specialist for more details.

[AspenViewHomes.com](http://AspenViewHomes.com)

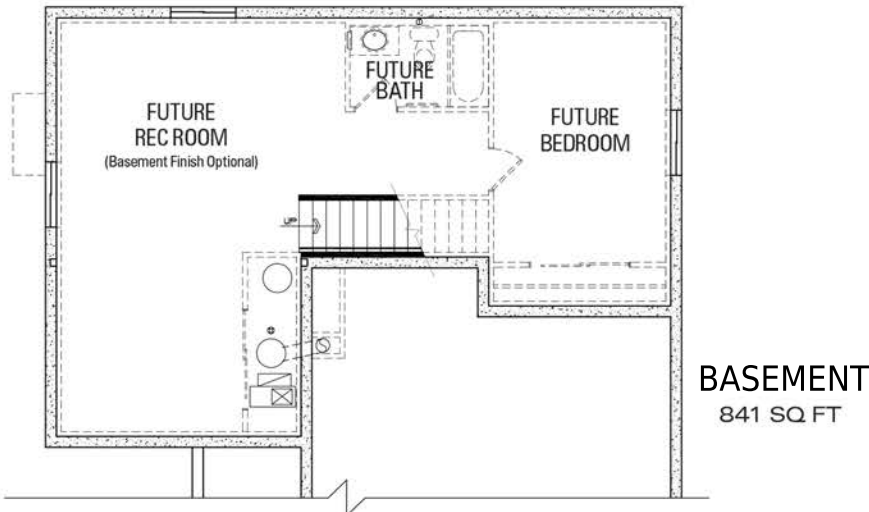
The best move you'll ever make.



# The Venice

**2824 Sq. Ft.**

**4 Bedrooms • 2.5 Baths**



\* Please Note : The enclosed materials are reproduced from artist's renderings. All measurements shown are approximate. Location, size, and existence of doors, windows, walls, fireplace, showers, and any other items depicted may vary depending on exterior preference or choice of options. Prices, plans, benefits, and locations are subject to change without notice. Floor plans, features, options/upgrades, and benefits vary by community. See the sales specialist for more details.



[AspenViewHomes.com](http://AspenViewHomes.com)

The best move you'll ever make.

